

Engine

Cummins QSB6.7/QSL 9

Net Power

156 kW - 209 kW(209 hp - 280 hp)

Operating Weight

31,800-36,200 kg

Bucket Capacity

1.4 – 1.9 m³

930E/936E
EXCAVATOR



TOUGH WORLD. TOUGH EQUIPMENT.

TOUGH WORLD. TOUGH EQUIPMENT.

You don't need to be told it's a tough world. It's your reality, you live it every day and you know how hard it can be on your people and your machines. It's getting tougher to make your business pay too, with rising costs, increasing legislation and greater competition. We understand and we've put that understanding into action with our new 930E/936E.

930E/936E. NO TOUGH COMPROMISES, JUST EVERYTHING YOU NEED AND NOTHING YOU DON'T

The construction equipment industry has seen an expensive trend towards over-engineered products. Some manufacturers genuinely believe that adding cost, adds perceived value in customers' eyes.

BUT YOU TOLD US A DIFFERENT STORY

You asked for a tough, well-engineered excavator, which can do the job. Any job.

YOU WANTED A LARGE-SIZED EXCAVATOR THAT DELIVERS ON 3 ESSENTIAL NEEDS;

1



FIT FOR PURPOSE

2



UPTIME AND SUPPORT

3



TOTAL COST OF OWNERSHIP



With the 930E/936E, we've met your challenge and given you everything you want – without compromise.



TOUGH FACTS

TOUGH QUALITY STANDARDS

When it comes to quality, we let our actions to speak for themselves.

We are following a rigorous Six Sigma methodology and consistently achieve ISO 9001 standards.

TOUGH RESEARCH AND TESTING

Finding tougher, smarter, safer and more cost-effective ways of working matters to you. It matters to us too. Our new Global Research & Development Centre in Liuzhou China, is a great example of this customer focused approach. We've established an international team of industry experts, backed up with the latest world-class technology, all focused on delivering greater value to you.

TOUGH PARTNERS

LiuGong has teamed up with some of the industry's best known names. Here's just a few of our valued joint venture partners;

- German drivetrain components manufacturer ZF Friedrichshafen AG
- Finnish mining and aggregates processing equipment manufacturer Metso
- North American diesel engine manufacturer Cummins

FIT FOR PURPOSE

Firstly, you need to know that your machine is up to the job; breaking, digging, lifting, working hard – anytime – anywhere. Excavators have got to be tough and they've got to perform.

OUR NEW 930E/936E HIGH PERFORMANCE FROM THE GROUND UP

1 TOUGHER UNDERCARRIAGE

With X-shaped frame built from high strength tensile steel, the 930E/936E's undercarriage is designed to withstand the toughest conditions. Continuous digging, lifting and loading can put excessive stress on machines. The 930E/936E has a long track beam and crawler system that guarantees greater stability. The structure also helps protect key components such as the travel motor from undue stress.

2 TOUGHER COMPONENTS

The undercarriage components are tougher too. Heavy duty rollers, reinforced idler frame and optional full track guard guarantee the integrity of our undercarriage. It's this core strength that enables our customers to keep working and earning – around the clock.

3 TOUGHER UPPER STRUCTURE

The upper structure of the 930E/936E is built around a reinforced and well-engineered H-beam, allowing the boom to be mounted exactly in the center of the machine. This central positioning helps the boom cope with more stress on the attachment group. It also means better distribution of weight and tension along the entire machine.

4 SAFER CAB

Our cabs are designed to protect your most important asset. Your operator. ROPS (Roll Over Protection System) and FOPS (Falling Object Protection System) safeguard your most important asset: your operator in the toughest environment. Visibility is key to protecting your operator and workers on site. The large glass surface area, increased by 15% on the E-series cab compared with our previous model, combined with the rear-view camera, provides an extraordinary view of the 930E/936E's surroundings.

5 TOUGHER BOOM AND ARM

The 930E/936E features a tougher, reinforced heavy duty boom and arm built from high-strength tensile steel, with castings and forgings in high stress areas for heavy-duty performance and maximum uptime. We also use over-sized pins to allow the 930E/936E, not just to work harder, but to work harder for longer. Our confidence in our machines is underlined by one of the most comprehensive warranties in the industry.

6 SIMPLY MULTIFUNCTIONAL

Switching attachments like buckets, breakers and shears can be time consuming and hazardous. We've made it fast, safe and simple with LiuGong's quick coupler and powerlatch tilt coupler. These are perfectly matched to a range of genuine LiuGong attachments including; buckets and breakers which can be changed from the seat of the cab in less than a minute, quick, safe and easy.

7 SIMPLER TO DO THE JOB RIGHT

Six selectable work modes equip even the newest operator with the skills of an expert, allowing them to perfectly match machine performance with the job, whatever that job may be.



8 FASTER CYCLE TIMES

Greater hydraulic flow and higher swing speeds combine to improve cycle times by 12% on tasks such as truck loading, digging, trenching and backfilling compared with our previous model.



JOBSITE FACT: ANYTIME

6000 hours registered and still working hard.
Tapegyseg Co. Hungary
 "We use our LiuGong excavator for breaking down large stone and concrete sections. In two years we have not had a problem and our machines are working 10-11 hours a day, six days a week."

JOBSITE FACT: ANYWHERE!

-49°C
 Temperatures drop but the work rate stays high.
 LiuGong Excavators played a key part in supporting China's Polar Exploration team. Extreme temperatures, high altitudes, strong winds and intense ultraviolet light made the Antarctic an extremely tough test environment.

TOUGH JUDGES

Operators are tough judges. They know what they like and what they don't. We've talked, we've listened and we've delivered a no-nonsense excavator that will do everything the operator wants and needs it to do. Job done? Judge for yourself.

TOUGH EQUIPMENT
40,000 Excavators currently in the field.
 Over **1/2 BILLION** productive hours worked.



POWER TO GET THE TOUGHEST JOBS DONE RIGHT

Fit for purpose is about giving your operators efficient and intelligent power when they need it, with control and precision. That's what we do.

POWER WITHOUT COMPROMISE.

The 930E/936E is powered by the latest Cummins QSL9 engine with a rated net power of 209 kW (280 hp) @ 2,000 rpm in compliance with EU Stage IV emission standards.

The compact QSL9 delivers unmatched and dependable power in its class yet it produces virtually zero emissions.

The engine utilizes a precise and high pressure common-rail fuel injection system, turbo charger (VGT) and air-to-air intercooler along with electronic engine controls to optimize machine performance. It's powerful. It's responsive. It tackles the toughest jobs without being thirsty for fuel, but above all, it's a joy to operate.



INTELLIGENT POWER CONTROL

The 930E/936E's advanced Intelligent Power Control (IPC) system intelligently delivers the power you need – when you need it.

This new generation computer-aided IPC system allows the 930E/936E's mechanical, electrical and hydraulic systems to work together in perfect harmony and helps even novice operators get more from the machine. An improved pump system delivers efficient oil output under lower engine speeds, resulting in fuel efficiency and reduced noise levels.

ADVANCED HYDRAULIC SYSTEM

LiuGong's advanced hydraulic system, regenerates oil in the cylinders more efficiently reducing heat, increasing fuel efficiency and improving cycle times.

The hydraulic system is highly effective in delivering power and precise control to where the operator really needs it, making even the toughest job simple.



SMART FUEL ECONOMY (SAVE UP TO 4 L)

The intelligent combination of powerful digging force, swing torque and lifting performance make the most of every drop of fuel. The 930E/936E maximizes fuel economy by intelligently regulating its idle speed by the second.



1 second: If no hydraulic request signal detected from the joystick, the engine speed is automatically dropped by 100 RPM, saving 1 liter of fuel every 2 hours.



3 seconds: If no activity is detected over three seconds the engine speed will decrease to idle. In each case, as soon as the system detects the hydraulic signal once more, the engine will immediately return to the previous throttle speed setting. Our tests indicate that up to 4 liters of fuel can be saved on an 8-hour shift.

DAILY CHECKS AND MAINTENANCE SHOULDN'T BE TOUGH

LiuGong excavators have been **specifically designed** for easy service and maintenance in even the most remote and harsh environments. If servicing is easy, it gets done.

PRACTICAL SERVICING

Smart and effective design makes service and maintenance fast and simple – that's good news for operators who work in some of the toughest places on the planet. Handrails are fitted as standard on the 950E, enabling safe and easy access to the upper structure for easy engine service and maintenance.

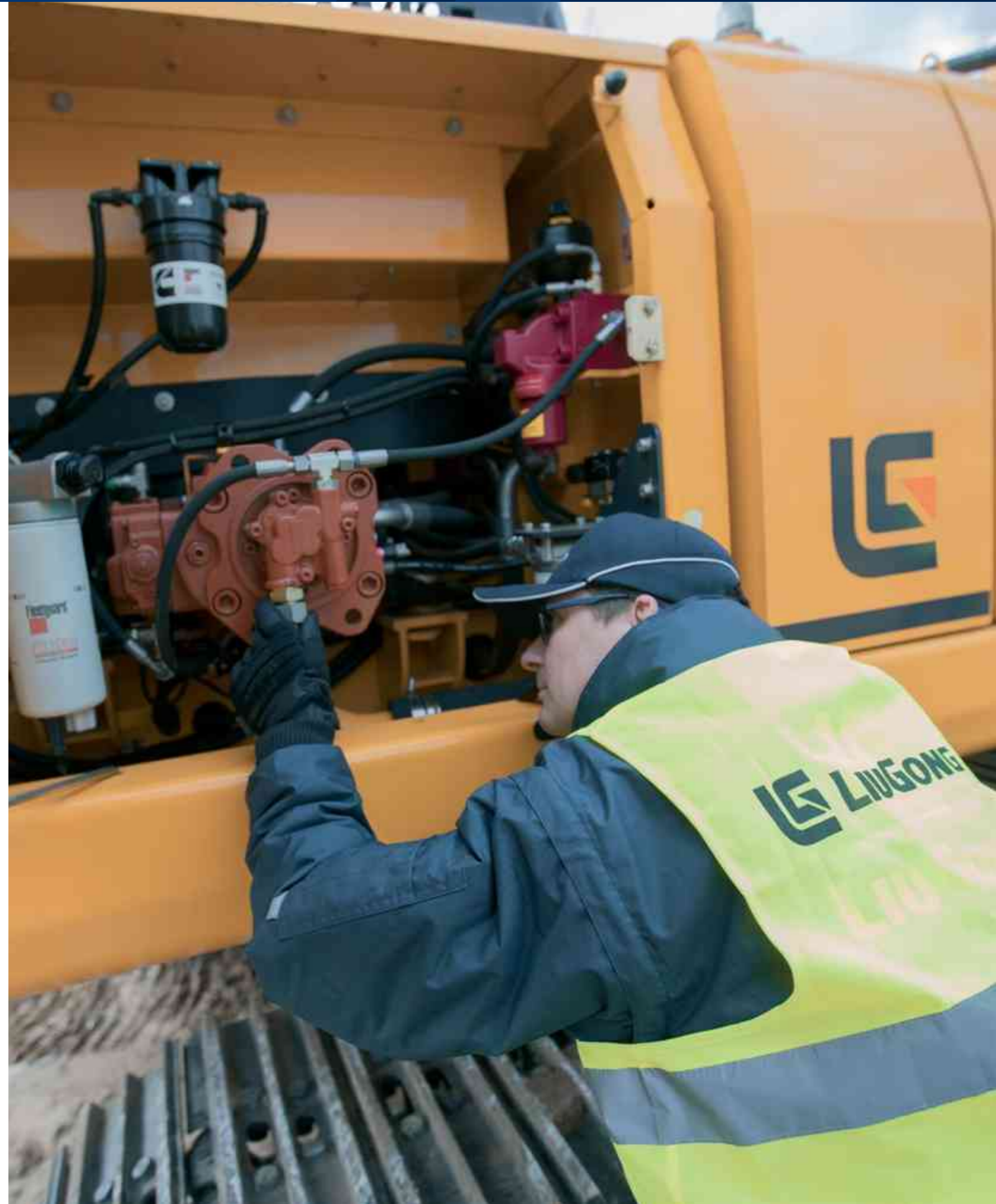
ON BOARD MONITORING

With onboard monitoring, the operator can check the machine's vital signs without leaving his seat. Using the LCD display, the operator can easily check oil temperatures and pressure levels, receive service interval alerts and access other information that contributes to simple maintenance and servicing of the machine.



EASILY ACCESSIBLE SERVICE POINTS MAKE DAILY CHECKS FAST AND EFFECTIVE

- Easily visible hydraulic oil level gauge
- Accessible, grouped filters
- Easy to replace A/C filter next to the cab door
- Maintenance free air filter



DESIGNED TO MAKE TOUGH WORK EASY ON THE OPERATOR

Climb into the cab of the 930E/936E and you can see that it has been designed by someone who has operated a machine in really tough conditions.

For a start, it's safe and easy to get in and out of. Trips and slips account for the majority of accidents onsite. Well-placed door handles, safety rails and anti-slip tape on the upper part of the machine make it easier and safer for operators to enter and exit the cab in all weathers and conditions. Inside, the cab is secure and protected with space to work and excellent 360 degree views of the site.

The controls are where the operator needs them to be. They are easy to see, easy to reach and easy to handle. The multi-adjustable air-suspension seats are comfortable and designed to keep the operator fresh and alert. The cab is sound proofed, vibration protected and well ventilated. It has advanced climate control to handle the changing seasons and is completely sealed to prevent dust contamination.



WE PUT OPERATORS FIRST

It makes good business sense to give operators the very best working environment – a comfortable operator is a productive operator. The 930E/936E keeps operators safer, more alert and more productive. Smart additions such as; rear view camera, heated seats, refrigerator or personal belonging compartment and an iPod/AUX connection combine to create the best environment– for the best operators.



ADVANCED CLIMATE CONTROL

An advanced climate control system creates the right environment in any weather.

LARGE LCD MONITOR

The easy-to-read, full-color LCD monitor displays all the critical information your operator needs, including working mode, hydraulic oil temperature, hydraulic pressure and service intervals.





JOBSITE UPTIME AND SUPPORT

Fit for purpose might convince you to buy your first machine, but it's uptime and support and total cost of ownership which will keep you coming back to buy more machines. Having confidence in the machine's back up and support network is a vital part of the purchasing decision. How do we at LiuGong measure up?

FAST RESPONDING GLOBAL NETWORK

We have an extensive dealer network in more than 130 countries. All supported by 12 regional subsidiaries and 9 global parts centers offering expert training, parts and service support.



WHERE YOU NEED US WHEN YOU NEED US

Reliability is built into our machines but all machines have some planned downtime. Our aim is to reduce even planned down time to the minimum by getting it right. Technician training and parts availability are also high on our agenda, as is keeping you

informed on service and maintenance work and providing clear and accurate estimates, invoices and communication. These may be small things, but customer feedback tells us that these basics really matter – so we aim to get them right.

MAINTENANCE AND SUPPORT PACKAGES

From genuine LiuGong parts, to full repair and maintenance contracts, LiuGong has the flexibility to offer the level of support and response to suit your business and applications. Whatever level of support you choose you can be confident that it is backed up by LiuGong's service promise.

**Right parts.
Right price.
Right service.**

**Above all,
we get it right
the first time.**



WE ARE LIUGONG. WORKING HARD TO KEEP OUR GLOBAL CUSTOMERS EARNING

8,000
Employees

20
Factories

12
Overseas
Offices

1,000
R&D Engineers

130+
Countries

5
R&D
Centers

9
Regional
parts
depots

Nearly
60 Years'
Experience

LIUGONG SERVICE PROMISE

Highly trained technicians utilizing the latest diagnostic equipment

15,000+ Genuine LiuGong parts available within 24hrs from our European Parts Distribution Center

Multi-lingual Service helpline and online support

Transparent estimates and invoicing

Clear communications through electronic parts catalogue



TOTAL COST OF OWNERSHIP

Fit for purpose and uptime and support are two key excavator purchasing criteria but ultimately, the machines earning potential, its overall life cost and its trade-in value really matter too.

When it comes to total cost of ownership LiuGong has a strong story to tell.

PROFESSIONAL ADVICE

We are committed to reducing your total cost of ownership and increasing your profits. As part of this, LiuGong's experts will provide targeted advice on everything, from choosing the right machine for your needs to maximizing its efficiency on site.

MACHINE AVAILABILITY

Our machines deliver everything you need and nothing you don't. They are expertly engineered NOT over engineered. As a result of having an extensive manufacturing operation right in the heart of Europe, we can offer significantly shorter lead times on

a range of models, compared with some manufacturers. In fact, we can deliver selected machines in as little as 4 weeks. The faster you can get a machine – the faster you can get working and earning. Our aim is to get you on to the jobsite fast.

TICKET PRICE

At LiuGong, our aim is to provide you with real, measurable value by giving you everything you need and nothing you don't. For example, we choose high quality, proven components such as Cummins engines and Kawasaki hydraulic pumps. These proven components, combined with LiuGong design and manufacturing quality, result in a high quality, competitive machine that is totally fit for purpose.

RESIDUAL VALUE

With the combination of LiuGong design and manufacturing excellence, world class components and comprehensive uptime support, our quality holds its value.

IT ALL ADDS UP

With the 930E/936E we've risen to the challenge and given you everything you need and nothing you don't.

It's an excavator which can handle any job, anywhere, backed up by LiuGong's service promise and designed to perform on the jobsite and on the balance sheet. Add up the benefits and you'll see that 930E/936E represents the formula for success.

FIT FOR PURPOSE
 +
UPTIME AND SUPPORT
 +
TOTAL COST OF OWNERSHIP
 =
CUSTOMER SATISFACTION

SPECIFICATIONS

| OPERATING WEIGHT | 930E | 936E |
|---|--------------------------|--------------------------|
| Operating weight includes coolant, lubricants, full fuel tank, cab, standard shoes, boom, arm, bucket and operator 75 kg. | | |
| Operating weight | 31,800 kg | 36,200 kg |
| Bucket capacity | 1.4 - 1.6 m ³ | 1.6 - 1.9 m ³ |

| ENGINE | | |
|---|--|--|
| Cummins EPA Tier 4 final / EU Stage IV, 6-cylinder straight Variable-Geometry Turbocharger (VGT), high pressure common rail, electronically controlled direct injection. Air cleaner: Cummins direct flow air filter. Cooling system: Air-to-air intercooler. | | |

| 930E | | |
|---------------------|--------------------------------|--|
| Engine model | Cummins QSB6.7 | |
| Aspiration | Variable-Geometry Turbocharger | |
| Charged air cooling | Aftercooler | |
| Cooling fan drive | Viscous clutch | |
| Displacement | 6.7 L | |
| Rated speed | 2,200 rpm | |
| Net power | 156 kW (209 hp) | |
| Gross power | 168 kW (225 hp) | |
| Maximum torque | 949 N·m @ 1,500 rpm | |
| Bore × Stroke | 107 × 124 mm | |

| 936E | | |
|---------------------|--------------------------------|--|
| Engine model | QSL9 | |
| Aspiration | Variable-Geometry Turbocharger | |
| Charged air cooling | Aftercooler | |
| Cooling fan drive | Viscous clutch | |
| Displacement | 8.9 L | |
| Rated speed | 2,000 rpm | |
| Net power | 209 kW (280 hp) | |
| Gross power | 221 kW (296 hp) | |
| Maximum torque | 1,451 N·m @ 1,400 rpm | |
| Bore × Stroke | 114 × 145 mm | |

| ELECTRIC SYSTEM | | |
|-----------------|---------------|--|
| System Voltage | 24 V | |
| Batteries | 2 × 12 V | |
| Alternator | 24 V - 70 A | |
| Start motor | 24 V - 7.8 kW | |

| UNDERCARRIAGE | | |
|----------------------------|--------------------|--|
| Track shoe each side | 48 | |
| Link pitch | 216 mm | |
| Shoe width, triple grouser | 600/700/800/900 mm | |
| Bottom rollers each side | 9 | |
| Top rollers each side | 2 | |

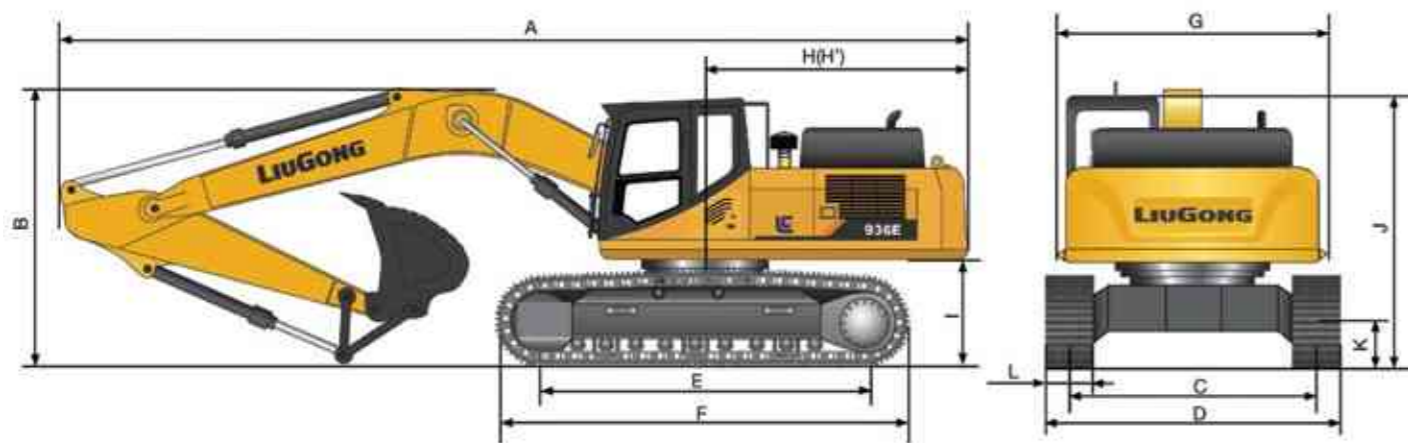
| SERVICE CAPACITIES | 930E | 936E |
|------------------------|--------|--------|
| Fuel tank | 520 L | 620 L |
| Engine oil | 26.5 L | 30 L |
| Final drive (each) | 9.5 L | 9.5 L |
| Swing drive | 10.5 L | 10.5 L |
| Cooling system | 35 L | 37 L |
| Hydraulic reservoir | 195 L | 240 L |
| Hydraulic system total | 360 L | 450 L |

| SOUND PERFORMANCE | | |
|---------------------------------------|---------|---------|
| Interior Sound Power Level (ISO 6396) | 70 dBA | 75 dBA |
| Exterior Sound Power Level (ISO 6395) | 103 dBA | 105 dBA |

| DRIVE AND BRAKES | | |
|---|---------------------------------|---------------------------------|
| Description | | |
| 2-speed axial piston motors with oil disk brakes. Steering controlled by two hand levers with pedals. | | |
| Max. travel speed | High: 5.5 km/h Low: 3.0 km/h | High: 5.5 km/h Low: 3.4 km/h |
| Gradeability | 35°/70% | |
| Max. drawbar pull | 300 kN | 320 kN |

| HYDRAULIC SYSTEM | | |
|-----------------------------|--|---------------|
| Main pump | Two variable displacement piston pumps | |
| Maximum flow | 2 × 266 L/min | 2 × 300 L/min |
| Pilot pump | Gear pump | |
| Type | Gear pump | |
| Maximum flow | 19 L/min | 19 L/min |
| Relief valve setting | | |
| Implement | 34.3/37.3 MPa | 34.3/37.3 MPa |
| Travel circuit | 34.3 MPa | 34.3 MPa |
| Slew circuit | 26.2 MPa | 26.2 MPa |
| Pilot circuit | 3.9 MPa | 3.9 MPa |

| Hydraulic cylinders | | |
|---------------------------------|-----------------|-----------------|
| Boom Cylinder – Bore × Stroke | Φ140 × 1,342 mm | Φ140 × 1,505 mm |
| Stick Cylinder – Bore × Stroke | Φ150 × 1,755 mm | Φ170 × 1,785 mm |
| Bucket Cylinder – Bore × Stroke | Φ140 × 1,135 mm | Φ145 × 1,220 mm |



| DIMENSIONS | 930E | | 936E | |
|---|-----------|----------------------------------|-----------|----------------------------------|
| Boom | 6,200 mm | | 6,400 mm | |
| Arm Options | 3,050 mm | 2,600 mm | 3,200 mm | 2,600 mm |
| A Shipping Length | 10,650 mm | | 11,167 mm | |
| B Shipping Height – Top of Boom | 3,525 mm | | 3,530 mm | |
| C Track Gauge | 2,590 mm | | 2,590 mm | |
| D Undercarriage Width – with 600 mm Shoes | 3,190 mm | | 3,190 mm | |
| 700 mm Shoes | 3,290 mm | | 3,290 mm | |
| 800 mm Shoes | 3,390 mm | | 3,390 mm | |
| 900 mm Shoes | 3,490 mm | | 3,490 mm | |
| E Length to Center of Rollers | 4,050 mm | | 4,050 mm | |
| F Track Length | 4,980 mm | | 4,944 mm | |
| G Overall Width of Upper Structure | 3,163 mm | (including protective side beam) | 3,163 mm | (including protective side beam) |
| H Tail Swing Radius | 3,230 mm | | 3,500 mm | |
| I Counterweight Ground Clearance | 1,215 mm | | 1,172 mm | |
| J Overall Height of Cab | 3,325 mm | (with protective equipment) | 3,318 mm | (with protective equipment) |
| K Min. Ground Clearance | 500 mm | | 532 mm | |
| L Track Shoe Width | 600 mm | | 600 mm | |

| BOOM DIMENSIONS | 930E | | 936E | | ARM DIMENSIONS | 930E | | 936E | |
|-----------------|----------|--|----------|--|----------------|----------|----------|----------|----------|
| Boom | 6,200 mm | | 6,400 mm | | Arm | 3,050 mm | 2,600 mm | 3,200 mm | 2,600 mm |
| Length | 6,420 mm | | 6,692 mm | | Length | 4,222 mm | 3,800 mm | 4,376 mm | 3,873 mm |
| Height | 1,788 mm | | 1,980 mm | | Height | 1,046 mm | 1,052 mm | 1,055 mm | 1,155 mm |
| Width | 942 mm | | 813 mm | | Width | 542 mm | 542 mm | 652 mm | 655 mm |
| Weight | 2,740 kg | | 3,250 kg | | Weight | 1,700 kg | 1,650 kg | 1,880 kg | 1,730 kg |

Cylinder, piping and pin included.
Boom cylinder pin excluded.

Cylinder, linkage and pin included.

BUCKET SELECTION - 930E

| Bucket Type | Capacity | Cutting width | Weight | Teeth pcs | 6.2 m HD Boom | |
|-----------------|--------------------|---------------|----------|-----------|---------------|-----------|
| | | | | | 3.05 m Arm | 2.6 m Arm |
| General Purpose | 1.4 m ³ | 1,400 mm | 1,383 kg | 5 | B | C |
| | 1.6 m ³ | 1,560 mm | 1,480 kg | 5 | NA | B |
| Heavy Duty | 1.4 m ³ | 1,400 mm | 1,450 kg | 5 | C | D |
| | 1.6 m ³ | 1,560 mm | 1,550 kg | 5 | NA | C |

The recommendations are given as a guide only, based on typical operation conditions. Bucket capacity based on ISO 7451, heaped material with a 1:1 angle of repose.

Maximum material density:
 A 1,200-1,300 kg/m³: Coal, Caliche, Shale
 B 1,400-1,600 kg/m³: Wet earth and clay, limestone, sandstone
 C 1,700-1,800 kg/m³: Granite, wet sand, well blasted rock
 D 1,900 kg/m³: Wet mud, Iron ore
 NA. Not applicable

BUCKET SELECTION - 936E

| Bucket type | Capacity | Cutting width | Weight | Teeth pcs | 6.4 m HD Boom | |
|-----------------|--------------------|---------------|----------|-----------|---------------|-----------|
| | | | | | 3.2 m Arm | 2.6 m Arm |
| General purpose | 1.6 m ³ | 1,520 mm | 1,915 kg | 5 | B | C |
| | 1.9 m ³ | 1,660 mm | 2,045 kg | 5 | NA | B |
| Heavy Duty | 1.6 m ³ | 1,520 mm | 1,915 kg | 5 | C | D |
| | 1.9 m ³ | 1,660 mm | 2,045 kg | 5 | NA | C |

The recommendations are given as a guide only, based on typical operation conditions. Bucket capacity based on ISO 7451, heaped material with a 1:1 angle of repose.

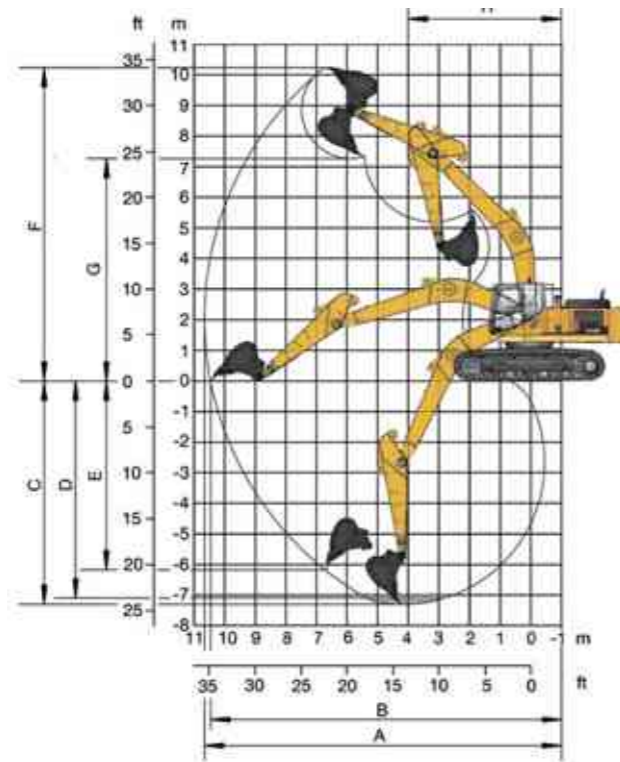
Maximum material density:
 A 1,200-1,300 kg/m³: Coal, Caliche, Shale
 B 1,400-1,600 kg/m³: Wet earth and clay, limestone, sandstone
 C 1,700-1,800 kg/m³: Granite, wet sand, well blasted rock
 D 1,900 kg/m³: Wet mud, Iron ore
 NA. Not applicable

MACHINE WEIGHTS AND GROUND PRESSURE - 930E

| Shoe width | Operating weight | | | Ground pressure | | | Overall width | | |
|------------|---|----------|----------|--|----------|----------|---------------|----------|----------|
| | 6.2 m boom, 3.05 m arm, 1.4 m ³ bucket, 5,500 kg counterweight | | | 6.2 m boom, 2.6 m arm, 1.6 m ³ bucket, 5,500 kg counterweight | | | | | |
| 600 mm | 31,800 kg | 60 kPa | 3,190 mm | 31,850 kg | 60 kPa | 3,190 mm | 31,850 kg | 60 kPa | 3,190 mm |
| 700 mm | 32,100 kg | 51.5 kPa | 3,290 mm | 32,150 kg | 51.6 kPa | 3,290 mm | 32,150 kg | 51.6 kPa | 3,290 mm |
| 800 mm | 32,500 kg | 45.6 kPa | 3,390 mm | 32,550 kg | 45.7 kPa | 3,390 mm | 32,550 kg | 45.7 kPa | 3,390 mm |
| 900 mm | 32,900 kg | 41 kPa | 3,490 mm | 32,950 kg | 41.1 kPa | 3,490 mm | 32,950 kg | 41.1 kPa | 3,490 mm |

MACHINE WEIGHTS AND GROUND PRESSURE - 936E

| Shoe width | Operating weight | | | Ground pressure | | | Overall width | | |
|------------|--|----------|----------|--|----------|----------|---------------|----------|----------|
| | 6.4 m boom, 3.2 m arm, 1.6 m ³ bucket, 6,500 kg counterweight | | | 6.4 m boom, 2.6 m arm, 1.9 m ³ bucket, 6,500 kg counterweight | | | | | |
| 600 mm | 36,200 kg | 67.5 kPa | 3,190 mm | 36,200 kg | 67.5 kPa | 3,190 mm | 36,200 kg | 67.5 kPa | 3,190 mm |
| 700 mm | 36,400 kg | 58.2 kPa | 3,290 mm | 36,400 kg | 58.2 kPa | 3,290 mm | 36,400 kg | 58.2 kPa | 3,290 mm |
| 800 mm | 36,603 kg | 51.2 kPa | 3,390 mm | 36,603 kg | 51.2 kPa | 3,390 mm | 36,603 kg | 51.2 kPa | 3,390 mm |
| 900 mm | 36,785 kg | 45.7 kPa | 3,490 mm | 36,785 kg | 45.7 kPa | 3,490 mm | 36,785 kg | 45.7 kPa | 3,490 mm |



| WORKING RANGE | 930E | 936E | | | |
|--|--------------------|--------------------|--------------------|--------------------|--------|
| Boom Length | 6,200 mm | 6,400 mm | | | |
| Arm Length | 3,050 mm | 2,600 mm | 3,200 mm | 2,600 mm | |
| A. Max. Digging Reach | 10,653 mm | 10,250 mm | 11,100 mm | 10,560 mm | |
| B. Max. Digging Reach on Ground | 10,453 mm | 10,032 mm | 10,900 mm | 10,350 mm | |
| C. Max. Digging Depth | 7,300 mm | 6,825 mm | 7,340 mm | 6,730 mm | |
| D. Max. Digging Depth, 2.44 m (8') level | 7,096 mm | 6,590 mm | 7,180 mm | 6,530 mm | |
| E. Max. Vertical Wall Digging Depth | 6,216 mm | 5,460 mm | 6,460 mm | 4,430 mm | |
| F. Max. Cutting Height | 10,300 mm | 10,007 mm | 10,240 mm | 9,830 mm | |
| G. Max. Dumping Height | 7,265 mm | 7,086 mm | 7,160 mm | 6,900 mm | |
| H. Min. Front Swing Radius | 4,040 mm | 4,040 mm | 4,465 mm | 4,700 mm | |
| Bucket Digging Force (ISO) | Normal | 187 kN | 187 kN | 232 kN | 232 kN |
| | Power Boost | 203 kN | 203 kN | 252 kN | 252 kN |
| Stick Digging Force (ISO) | Normal | 137 kN | 152 kN | 170 kN | 210 kN |
| | Power Boost | 149 kN | 165 kN | 185 kN | 228 kN |
| Bucket Capacity | 1.4 m ³ | 1.6 m ³ | 1.6 m ³ | 1.9 m ³ | |
| Bucket Tip Radius | 1,606 mm | 1,606 mm | 1,687 mm | 1,687 mm | |

Lifting capacity at the arm end without bucket.
For lifting capacity including bucket, weight of the bucket or the bucket with quick coupler must be deducted from the lifting capacities.
Lifting capacities are based on the machine standing on a firm, uniform supporting surface.



Rating over - front (Cf) Rating over - side (Cs)

- Do not attempt to lift or hold any load that is greater than these rated values at their specified load radius and height. Weight of all accessories must be deducted from the above lifting capacities.
- The rated loads are in compliance with ISO 10567 Hydraulic Excavator Lift Capacity Rating Standard. They do not exceed 87% of hydraulic lifting capacity or 75% tipping load.
- Ratings at bucket lift hook.
- Lifting capacities are based on machine standing on level, firm and uniform ground.
- *Indicates the load is limited by hydraulic capacity rather than tipping capacity.
- Operator should be fully acquainted with the Operator's and Maintenance Instructions before operating this machine and rules for the safe operation of equipment should be adhered to at all times.

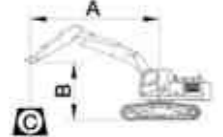
LIFTING CAPACITY (METRIC)

930E with 600 mm shoes, 2,600 mm arm

Conditions

A: Load radius
B: Load point height
C: Lifting capacity rating
Cf: Rating loads over front
Cs: Rating loads over side

Boom length: 6,200 mm
Arm length: 2,600 mm
Bucket: None
Counterweight: 5,500 kg
Shoes: 600 mm triple grouser
Unit: kg



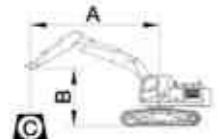
| B (m) | A (Unit: m) | | | | | | | | | | |
|--------------|-------------|---------|---------|---------|---------|--------|--------|-------|-----------|--------|-------|
| | 3.0 | | 4.5 | | 6.0 | | 7.5 | | MAX REACH | | A (m) |
| 7.5 | | | | | *6,780 | *6,780 | | | *6,930 | *6,930 | |
| 6.0 | | | | | *7,090 | *7,090 | *6,910 | 6,040 | *6,920 | 5,910 | 7.6 |
| 4.5 | | | *9,840 | *9,840 | *8,010 | *8,010 | *7,190 | 5,940 | *7,050 | 5,210 | 8.2 |
| 3.0 | | | *12,440 | 11,430 | *9,200 | 7,780 | *7,760 | 5,770 | *6,960 | 4,780 | 8.6 |
| 1.5 | | | *14,240 | 10,880 | *10,250 | 7,470 | *8,320 | 5,610 | *7,490 | 4,700 | 8.6 |
| GROUND LEVEL | | | *14,770 | 10,720 | *10,860 | 7,300 | *8,670 | 5,510 | *7,750 | 4,800 | 8.4 |
| -1.5 | *12,960 | *12,960 | *14,430 | 10,760 | *10,880 | 7,270 | *8,580 | 5,510 | *8,180 | 5,270 | 7.8 |
| -3.0 | *17,940 | *17,940 | *13,300 | 10,940 | *10,130 | 7,380 | | | *8,550 | 6,230 | 6.9 |
| -4.5 | *14,400 | *14,400 | *10,800 | *10,800 | | | | | *8,650 | 8,620 | 5.5 |

930E with 700 mm shoes, 2,600 mm arm

Conditions

A: Load radius
B: Load point height
C: Lifting capacity rating
Cf: Rating loads over front
Cs: Rating loads over side

Boom length: 6,400 mm
Arm length: 2,600 mm
Bucket: None
Counterweight: 5,500 kg
Shoes: 700 mm triple grouser
Unit: kg



| B (m) | A (Unit: m) | | | | | | | | | | |
|--------------|-------------|---------|---------|---------|---------|--------|--------|-------|-----------|--------|-------|
| | 3.0 | | 4.5 | | 6.0 | | 7.5 | | MAX REACH | | A (m) |
| 7.5 | Cf | Cs | Cf | Cs | Cf | Cs | | | Cf | Cs | |
| 6.0 | | | | | *7,090 | *7,090 | *6,910 | 6,120 | *6,920 | 5,990 | 7.6 |
| 4.5 | | | *9,840 | *9,840 | *8,010 | *8,010 | *7,190 | 6,010 | *7,050 | 5,280 | 8.2 |
| 3.0 | | | *12,440 | 11,590 | *9,200 | 7,880 | *7,760 | 5,850 | *6,960 | 4,840 | 8.6 |
| 1.5 | | | *14,240 | 11,040 | *10,250 | 7,570 | *8,320 | 5,690 | *7,490 | 4,770 | 8.6 |
| GROUND LEVEL | | | *14,770 | 10,880 | *10,860 | 7,410 | *8,670 | 5,590 | *7,750 | 4,870 | 8.4 |
| -1.5 | *12,960 | *12,960 | *14,430 | 10,910 | *10,880 | 7,380 | *8,580 | 5,590 | *8,180 | 5,340 | 7.8 |
| -3.0 | *17,940 | *17,940 | *13,300 | 11,090 | *10,130 | 7,490 | | | *8,550 | 6,320 | 6.9 |
| -4.5 | *14,400 | *14,400 | *10,800 | *10,800 | | | | | *8,650 | *8,650 | 5.5 |

Lifting capacity at the arm end without bucket.
For lifting capacity including bucket, weight of the bucket or the bucket with quick coupler must be deducted from the lifting capacities.
Lifting capacities are based on the machine standing on a firm, uniform supporting surface.



Rating over - front (Cf) Rating over - side (Cs)

- Do not attempt to lift or hold any load that is greater than these rated values at their specified load radius and height. Weight of all accessories must be deducted from the above lifting capacities.
- The rated loads are in compliance with ISO 10567 Hydraulic Excavator Lift Capacity Rating Standard. They do not exceed 87% of hydraulic lifting capacity or 75% tipping load.
- Ratings at bucket lift hook.

- Lifting capacities are based on machine standing on level, firm and uniform ground.
- *Indicates the load is limited by hydraulic capacity rather than tipping capacity.
- Operator should be fully acquainted with the Operator's and Maintenance Instructions before operating this machine and rules for the safe operation of equipment should be adhered to at all times.

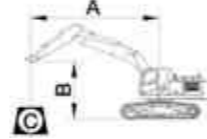
LIFTING CAPACITY (METRIC)

930E with 800 mm shoes, 2,600 mm arm

A: Load radius
B: Load point height
C: Lifting capacity rating
Cf: Rating loads over front
Cs: Rating loads over side

Conditions

Boom length: 6,200 mm
Arm length: 2,600 mm
Bucket: None
Counterweight: 5,500 kg
Shoes: 800 mm triple grouser
Unit: kg



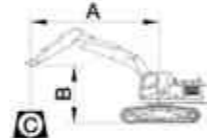
| B (m) | A (Unit: m) | | | | | | | | | | |
|--------------|-------------|---------|---------|---------|---------|--------|--------|-------|-----------|--------|-------|
| | 3.0 | | 4.5 | | 6.0 | | 7.5 | | MAX REACH | | A (m) |
| 7.5 | | | | | *6,780 | *6,780 | | | *6,930 | *6,930 | |
| 6.0 | | | | | *7,090 | *7,090 | *6,910 | 6,240 | *6,920 | 6,110 | 7.6 |
| 4.5 | | | *9,840 | *9,840 | *8,010 | *8,010 | *7,190 | 6,130 | *7,050 | 5,380 | 8.2 |
| 3.0 | | | *12,440 | 11,820 | *9,200 | 8,040 | *7,760 | 5,970 | *6,960 | 4,940 | 8.6 |
| 1.5 | | | *14,240 | 11,270 | *10,250 | 7,730 | *8,320 | 5,810 | *7,490 | 4,870 | 8.6 |
| GROUND LEVEL | | | *14,770 | 11,110 | *10,860 | 7,560 | *8,670 | 5,710 | *7,750 | 4,980 | 8.4 |
| -1.5 | *12,960 | *12,960 | *14,430 | 11,140 | *10,880 | 7,530 | *8,580 | 5,710 | *8,180 | 5,460 | 7.8 |
| -3.0 | *17,940 | *17,940 | *13,300 | 11,320 | *10,130 | 7,650 | | | *8,550 | 6,450 | 6.9 |
| -4.5 | *14,400 | *14,400 | *10,800 | *10,800 | | | | | *8,650 | *8,650 | 5.5 |

930E with 900 mm shoes, 2,600 mm arm

A: Load radius
B: Load point height
C: Lifting capacity rating
Cf: Rating loads over front
Cs: Rating loads over side

Conditions

Boom length: 6,200 mm
Arm length: 2,600 mm
Bucket: None
Counterweight: 5,500 kg
Shoes: 900 mm triple grouser
Unit: kg



| B (m) | A (Unit: m) | | | | | | | | | | |
|--------------|-------------|---------|---------|---------|---------|--------|--------|-------|-----------|--------|-------|
| | 3.0 | | 4.5 | | 6.0 | | 7.5 | | MAX REACH | | A (m) |
| | Cf | Cs | Cf | Cs | Cf | Cs | Cf | Cs | Cf | Cs | |
| 7.5 | | | | | *6,780 | *6,780 | | | *6,930 | *6,930 | 6.6 |
| 6.0 | | | | | *7,090 | *7,090 | *6,910 | 6,370 | *6,920 | 6,240 | 7.6 |
| 4.5 | | | *9,840 | *9,840 | *8,010 | *8,010 | *7,190 | 6,270 | *7,050 | 5,500 | 8.2 |
| 3.0 | | | *12,440 | 12,070 | *9,200 | 8,210 | *7,760 | 6,100 | *6,960 | 5,060 | 8.6 |
| 1.5 | | | *14,240 | 11,530 | *10,250 | 7,910 | *8,320 | 5,940 | *7,490 | 4,980 | 8.6 |
| GROUND LEVEL | | | *14,770 | 11,360 | *10,860 | 7,740 | *8,670 | 5,840 | *7,750 | 5,090 | 8.4 |
| -1.5 | *12,960 | *12,960 | *14,430 | 11,400 | *10,880 | 7,710 | *8,580 | 5,840 | *8,180 | 5,590 | 7.8 |
| -3.0 | *17,940 | *17,940 | *13,300 | 11,580 | *10,130 | 7,820 | | | *8,550 | 6,590 | 6.9 |
| -4.5 | *14,400 | *14,400 | *10,800 | *10,800 | | | | | *8,650 | *8,650 | 5.5 |

Lifting capacity at the arm end without bucket.
For lifting capacity including bucket, weight of the bucket or the bucket with quick coupler must be deducted from the lifting capacities.
Lifting capacities are based on the machine standing on a firm, uniform supporting surface.



Rating over - front (Cf) Rating over - side (Cs)

- Do not attempt to lift or hold any load that is greater than these rated values at their specified load radius and height. Weight of all accessories must be deducted from the above lifting capacities.
- The rated loads are in compliance with ISO 10567 Hydraulic Excavator Lift Capacity Rating Standard. They do not exceed 87% of hydraulic lifting capacity or 75% tipping load.
- Ratings at bucket lift hook.

- Lifting capacities are based on machine standing on level, firm and uniform ground.
- *Indicates the load is limited by hydraulic capacity rather than tipping capacity.
- Operator should be fully acquainted with the Operator's and Maintenance Instructions before operating this machine and rules for the safe operation of equipment should be adhered to at all times.

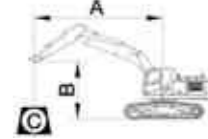
LIFTING CAPACITY (METRIC)

930E with 600 mm shoes, 3,050 mm arm

A: Load radius
B: Load point height
C: Lifting capacity rating
Cf: Rating loads over front
Cs: Rating loads over side

Conditions

Boom length: 6,200 mm
Arm length: 3,050 mm
Bucket: None
Counterweight: 5,500 kg
Shoes: 600 mm triple grouser
Unit: kg



| B (m) | A (Unit: m) | | | | | | | | | | | | |
|--------------|-------------|---------|---------|---------|---------|--------|--------|-------|--------|-------|-----------|-------|-------|
| | 3 | | 4.5 | | 6.0 | | 7.5 | | 9.0 | | MAX REACH | | A (m) |
| 6.0 | | | | | *6,510 | *6,510 | *7,940 | 6,080 | | | *5,880 | 5,380 | |
| 4.5 | | | *8,970 | *8,970 | *7,480 | *7,480 | *6,780 | 5,960 | | | *5,760 | 4,770 | 8.7 |
| 3.0 | | | *11,630 | *11,630 | *8,740 | 7,840 | *7,410 | 5,770 | *5,900 | 4,470 | *5,900 | 4,470 | 9.0 |
| 1.5 | | | *13,750 | 11,020 | *9,920 | 7,510 | *8,060 | 5,600 | *6,640 | 4,400 | *6,640 | 4,400 | 9.0 |
| GROUND LEVEL | | | *14,670 | 10,750 | *10,690 | 7,300 | *8,520 | 5,480 | | | *7,130 | 4,480 | 8.8 |
| -1.5 | *12,340 | *12,340 | *14,640 | 10,730 | *10,900 | 7,230 | *8,610 | 5,440 | | | *7,650 | 4,820 | 8.3 |
| -3.0 | *19,230 | *19,230 | *13,770 | 10,850 | *10,420 | 7,300 | *7,940 | 5,530 | | | *7,940 | 5,530 | 7.5 |
| -4.5 | *16,070 | *16,070 | *11,770 | 11,140 | *8,640 | 7,540 | | | | | *8,210 | 7,240 | 6.2 |

930E with 700 mm shoes, 3,050 mm arm

A: Load radius
B: Load point height
C: Lifting capacity rating
Cf: Rating loads over front
Cs: Rating loads over side

Conditions

Boom length: 6,200 mm
Arm length: 3,050 mm
Bucket: None
Counterweight: 5,500 kg
Shoes: 700 mm triple grouser
Unit: kg



| B (m) | A (Unit: m) | | | | | | | | | | | | |
|--------------|-------------|---------|---------|---------|---------|--------|--------|-------|--------|-------|-----------|-------|-------|
| | 3.0 | | 4.5 | | 6.0 | | 7.5 | | 9.0 | | MAX REACH | | A (m) |
| | Cf | Cs | Cf | Cs | Cf | Cs | Cf | Cs | Cf | Cs | Cf | Cs | |
| 6.0 | | | | | *6,510 | *6,510 | *6,370 | 6,160 | | | *5,880 | 5,460 | 8.1 |
| 4.5 | | | *8,970 | *8,970 | *7,480 | *7,480 | *6,780 | 6,030 | | | *5,760 | 4,840 | 8.7 |
| 3.0 | | | *11,630 | *11,630 | *8,740 | 7,940 | *7,410 | 5,850 | *5,900 | 4,530 | *5,900 | 4,530 | 9.0 |
| 1.5 | | | *13,750 | 11,170 | *9,920 | 7,610 | *8,060 | 5,680 | *6,640 | 4,460 | *6,640 | 4,460 | 9.0 |
| GROUND LEVEL | | | *14,670 | 10,910 | *10,690 | 7,410 | *8,520 | 5,560 | | | *7,130 | 4,550 | 8.8 |
| -1.5 | *12,340 | *12,340 | *14,640 | 10,880 | *10,900 | 7,340 | *8,610 | 5,520 | | | *7,650 | 4,890 | 8.3 |
| -3.0 | *19,230 | *19,230 | *13,770 | 11,010 | *10,420 | 7,400 | *7,940 | 5,610 | | | *7,940 | 5,610 | 7.5 |
| -4.5 | *16,070 | *16,070 | *11,770 | 11,300 | *8,640 | 7,640 | | | | | *8,210 | 7,340 | 6.2 |

Lifting capacity at the arm end without bucket.
For lifting capacity including bucket, weight of the bucket or the bucket with quick coupler must be deducted from the lifting capacities.
Lifting capacities are based on the machine standing on a firm, uniform supporting surface.



Rating over - front (Cf) Rating over - side (Cs)

- Do not attempt to lift or hold any load that is greater than these rated values at their specified load radius and height. Weight of all accessories must be deducted from the above lifting capacities.
- The rated loads are in compliance with ISO 10567 Hydraulic Excavator Lift Capacity Rating Standard. They do not exceed 87% of hydraulic lifting capacity or 75% tipping load.
- Ratings at bucket lift hook.

- Lifting capacities are based on machine standing on level, firm and uniform ground.
- *Indicates the load is limited by hydraulic capacity rather than tipping capacity.
- Operator should be fully acquainted with the Operator's and Maintenance Instructions before operating this machine and rules for the safe operation of equipment should be adhered to at all times.

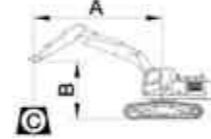
LIFTING CAPACITY (METRIC)

930E with 800 mm shoes, 3,050 mm arm

A: Load radius
B: Load point height
C: Lifting capacity rating
Cf: Rating loads over front
Cs: Rating loads over side

Conditions

Boom length: 6,200 mm
Arm length: 3,050 mm
Bucket: None
Counterweight: 5,500 kg
Shoes: 800 mm triple grouser
Unit: kg



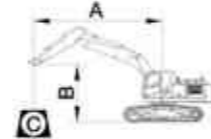
| B (m) | A (Unit: m) | | | | | | | | | | | A (m) | |
|--------------|-------------|---------|---------|---------|---------|--------|--------|-------|--------|-----------|--------|-------|-----|
| | 3 | 4.5 | | 6.0 | | 7.5 | | 9.0 | | MAX REACH | | | |
| 6.0 | | | | | *6,510 | *6,510 | *6,370 | 6,280 | | | *5,880 | 5,570 | 8.1 |
| 4.5 | | | *8,970 | *8,970 | *7,480 | *7,480 | *6,780 | 6,150 | | | *5,760 | 4,940 | 8.7 |
| 3.0 | | | *11,630 | *11,630 | *8,740 | 8,100 | *7,410 | 5,970 | *5,900 | 4,630 | *5,900 | 4,630 | 9.0 |
| 1.5 | | | *13,750 | 11,400 | *9,920 | 7,770 | *8,060 | 5,800 | *6,640 | 4,560 | *6,640 | 4,560 | 9.0 |
| GROUND LEVEL | | | *14,670 | 11,140 | *10,690 | 7,560 | *8,520 | 5,680 | | | *7,130 | 4,650 | 8.8 |
| -1.5 | *12,340 | *12,340 | *14,640 | 11,110 | *10,900 | 7,500 | *8,610 | 5,640 | | | *7,650 | 5,000 | 8.3 |
| -3.0 | *19,230 | *19,230 | *13,770 | 11,240 | *10,420 | 7,560 | *7,940 | 5,730 | | | *7,940 | 5,730 | 7.5 |
| -4.5 | *16,070 | *16,070 | *11,770 | 11,530 | *8,640 | 7,800 | | | | | *8,210 | 7,500 | 6.2 |

930E with 900 mm shoes, 3,050 mm arm

A: Load radius
B: Load point height
C: Lifting capacity rating
Cf: Rating loads over front
Cs: Rating loads over side

Conditions

Boom length: 6,200 mm
Arm length: 3,050 mm
Bucket: None
Counterweight: 5,500 kg
Shoes: 900 mm triple grouser
Unit: kg



| B (m) | A (Unit: m) | | | | | | | | | | | A (m) | |
|--------------|-------------|---------|---------|---------|---------|--------|--------|--------|--------|-------|-----------|-------|-----|
| | 3.0 | | 4.5 | | 6.0 | | 7.5 | | 9.0 | | MAX REACH | | |
| 6.0 | | | | | *6,510 | *6,510 | *6,370 | *6,370 | | | *5,880 | 5,690 | 8.1 |
| 4.5 | | | *8,970 | *8,970 | *7,480 | *7,480 | *6,780 | 6,290 | | | *5,760 | 5,050 | 8.7 |
| 3.0 | | | *11,630 | *11,630 | *8,740 | 8,270 | *7,410 | 6,110 | *5,900 | 4,730 | *5,900 | 4,730 | 9.0 |
| 1.5 | | | *13,750 | 11,660 | *9,920 | 7,940 | *8,060 | 5,930 | *6,640 | 4,660 | *6,640 | 4,660 | 9.0 |
| GROUND LEVEL | | | *14,670 | 11,400 | *10,690 | 7,740 | *8,520 | 5,810 | | | *7,130 | 4,760 | 8.8 |
| -1.5 | *12,340 | *12,340 | *14,640 | 11,370 | *10,900 | 7,670 | *8,610 | 5,780 | | | *7,650 | 5,110 | 8.3 |
| -3.0 | *19,230 | *19,230 | *13,770 | 11,490 | *10,420 | 7,730 | *7,940 | 5,870 | | | *7,940 | 5,870 | 7.5 |
| -4.5 | *16,070 | *16,070 | *11,770 | *11,770 | *8,640 | 7,980 | | | | | *8,210 | 7,660 | 6.2 |

Lifting capacity at the arm end without bucket.
For lifting capacity including bucket, weight of the bucket or the bucket with quick coupler must be deducted from the lifting capacities.
Lifting capacities are based on the machine standing on a firm, uniform supporting surface.



Rating over - front (Cf) Rating over - side (Cs)

- Do not attempt to lift or hold any load that is greater than these rated values at their specified load radius and height. Weight of all accessories must be deducted from the above lifting capacities.
- The rated loads are in compliance with ISO 10567 Hydraulic Excavator Lift Capacity Rating Standard. They do not exceed 87% of hydraulic lifting capacity or 75% tipping load.
- Ratings at bucket lift hook.

- Lifting capacities are based on machine standing on level, firm and uniform ground.
- *Indicates the load is limited by hydraulic capacity rather than tipping capacity.
- Operator should be fully acquainted with the Operator's and Maintenance Instructions before operating this machine and rules for the safe operation of equipment should be adhered to at all times.

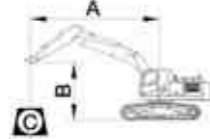
LIFTING CAPACITY (METRIC)

936E with 600 mm shoes, 2,600 mm arm

A: Load radius
B: Load point height
C: Lifting capacity rating
Cf: Rating loads over front
Cs: Rating loads over side

Conditions

Boom length: 6,400 mm
Arm length: 2,600 mm
Bucket: None
Counterweight: 6,500 kg
Shoes: 600 mm triple grouser
Unit: kg



| B (m) | A (Unit: m) | | | | | | | | | A (m) | |
|--------------|-------------|--|---------|---------|---------|--------|-----------|-------|--------|--------|-----|
| | 4.5 | | 6.0 | | 7.5 | | MAX REACH | | | | |
| 6.0 | | | | | *9,319 | *9,319 | *8,627 | 6,724 | *8,575 | 6,128 | 7.9 |
| 4.5 | | | *13,273 | *13,273 | *10,410 | 9,031 | *9,029 | 6,558 | *8,560 | 5,400 | 8.5 |
| 3.0 | | | | | *11,712 | 8,546 | *9,643 | 6,327 | 8,279 | 5,031 | 8.8 |
| 1.5 | | | | | *12,739 | 8,161 | *10,186 | 6,119 | 8,139 | 4,918 | 8.8 |
| GROUND LEVEL | | | *17,677 | 11,726 | *13,154 | 7,955 | 10,155 | 5,990 | 8,383 | 5,037 | 8.6 |
| -1.5 | *16,749 | | 11,784 | | *12,835 | 7,919 | *10,096 | 5,975 | *9,103 | 5,453 | 8.1 |
| -3.0 | *14,900 | | 11,994 | | *11,580 | 8,044 | | | *9,192 | 6,378 | 7.2 |
| -4.5 | *11,474 | | *11,474 | | | | | | *8,748 | *8,748 | 5.8 |

936E with 700 mm shoes, 2,600 mm arm

A: Load radius
B: Load point height
C: Lifting capacity rating
Cf: Rating loads over front
Cs: Rating loads over side

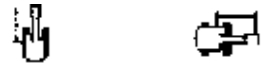
Conditions

Boom length: 6,400 mm
Arm length: 2,600 mm
Bucket: None
Counterweight: 6,500 kg
Shoes: 700 mm triple grouser
Unit: kg



| B (m) | A (Unit: m) | | | | | | | | | A (m) | |
|--------------|-------------|--|---------|---------|---------|--------|-----------|-------|--------|--------|-----|
| | 4.5 | | 6.0 | | 7.5 | | MAX REACH | | | | |
| 6.0 | | | | | *9,319 | *9,319 | *8,627 | 6,835 | *8,575 | 6,284 | 7.9 |
| 4.5 | | | *13,273 | *13,273 | *10,410 | 9,177 | *9,029 | 6,668 | *8,560 | 5,526 | 8.5 |
| 3.0 | | | | | *11,712 | 8,692 | *9,643 | 6,438 | 8,455 | 5,147 | 8.8 |
| 1.5 | | | | | *12,739 | 8,306 | *10,186 | 6,229 | 8,352 | 5,054 | 8.8 |
| GROUND LEVEL | | | *17,677 | 11,940 | *13,154 | 8,100 | 10,321 | 6,101 | 8,560 | 5,151 | 8.6 |
| -1.5 | *16,749 | | 11,998 | | *12,835 | 8,065 | *10,096 | 6,086 | *9,103 | 5,562 | 8.1 |
| -3.0 | *14,900 | | 12,208 | | *11,580 | 8,189 | | | *9,192 | 6,542 | 7.2 |
| -4.5 | *11,474 | | *11,474 | | | | | | *8,748 | *8,748 | 5.8 |

Lifting capacity at the arm end without bucket.
For lifting capacity including bucket, weight of the bucket or the bucket with quick coupler must be deducted from the lifting capacities.
Lifting capacities are based on the machine standing on a firm, uniform supporting surface.



Rating over - front (Cf) Rating over - side (Cs)

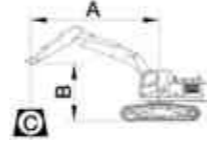
- Do not attempt to lift or hold any load that is greater than these rated values at their specified load radius and height. Weight of all accessories must be deducted from the above lifting capacities.
- The rated loads are in compliance with ISO 10567 Hydraulic Excavator Lift Capacity Rating Standard. They do not exceed 87% of hydraulic lifting capacity or 75% tipping load.
- Ratings at bucket lift hook.
- Lifting capacities are based on machine standing on level, firm and uniform ground.
- *Indicates the load is limited by hydraulic capacity rather than tipping capacity.
- Operator should be fully acquainted with the Operator's and Maintenance Instructions before operating this machine and rules for the safe operation of equipment should be adhered to at all times.

LIFTING CAPACITY (METRIC)

936E with 800 mm shoes, 2,600 mm arm

Conditions

Boom length: 6,400 mm
Arm length: 2,600 mm
Bucket: None
Counterweight: 6,500 kg
Shoes: 800 mm triple grouser
Unit: kg



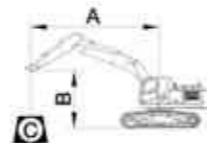
A: Load radius
B: Load point height
C: Lifting capacity rating
Cf: Rating loads over front
Cs: Rating loads over side

| B (m) | A (Unit: m) | | | | | | | | A (m) |
|--------------|-------------|---------|---------|-------|---------|-------|-----------|--------|-------|
| | 4.5 | | 6.0 | | 7.5 | | MAX REACH | | |
| 6.0 | | | | | | | | | 7.9 |
| 4.5 | *13,273 | *13,273 | *10,410 | 9,337 | *9,029 | 6,789 | *8,560 | 5,630 | 8.5 |
| 3.0 | | | *11,712 | 8,852 | *9,643 | 6,559 | 8,603 | 5,248 | 8.8 |
| 1.5 | | | *12,739 | 8,466 | *10,186 | 6,351 | 8,499 | 5,154 | 8.8 |
| GROUND LEVEL | *17,677 | 12,174 | *13,154 | 8,260 | *10,421 | 6,222 | 8,712 | 5,254 | 8.6 |
| -1.5 | *16,749 | 12,233 | *12,835 | 8,225 | *10,096 | 6,207 | *9,103 | 5,672 | 8.1 |
| -3.0 | *14,900 | 12,443 | *11,580 | 8,349 | | | *9,192 | 6,670 | 7.2 |
| -4.5 | *11,474 | *11,474 | | | | | *8,748 | *8,748 | 5.8 |

936E with 900 mm shoes, 2,600 mm arm

Conditions

Boom length: 6,400 mm
Arm length: 2,600 mm
Bucket: None
Counterweight: 6,500 kg
Shoes: 900 mm triple grouser
Unit: kg



A: Load radius
B: Load point height
C: Lifting capacity rating
Cf: Rating loads over front
Cs: Rating loads over side

| B (m) | A (Unit: m) | | | | | | | | A (m) |
|--------------|-------------|---------|---------|-------|---------|-------|-----------|--------|-------|
| | 4.5 | | 6.0 | | 7.5 | | MAX REACH | | |
| 6.0 | | | | | | | | | 7.9 |
| 4.5 | *13,273 | *13,273 | *10,410 | 9,564 | *9,029 | 6,962 | *8,560 | 5,779 | 8.5 |
| 3.0 | | | *11,712 | 9,080 | *9,643 | 6,731 | *8,646 | 5,390 | 8.8 |
| 1.5 | | | *12,739 | 8,694 | *10,186 | 6,523 | 8,709 | 5,297 | 8.8 |
| GROUND LEVEL | *17,677 | 12,508 | *13,154 | 8,488 | *10,421 | 6,395 | 8,928 | 5,401 | 8.6 |
| -1.5 | *16,749 | 12,567 | *12,835 | 8,453 | *10,096 | 6,380 | *9,103 | 5,830 | 8.1 |
| -3.0 | *14,900 | 12,777 | *11,580 | 8,577 | | | *9,192 | 6,851 | 7.2 |
| -4.5 | *11,474 | *11,474 | | | | | *8,748 | *8,748 | 5.8 |

Lifting capacity at the arm end without bucket.
For lifting capacity including bucket, weight of the bucket or the bucket with quick coupler must be deducted from the lifting capacities.
Lifting capacities are based on the machine standing on a firm, uniform supporting surface.



Rating over - front (Cf) Rating over - side (Cs)

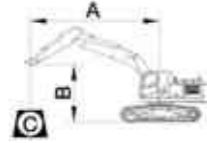
- Do not attempt to lift or hold any load that is greater than these rated values at their specified load radius and height. Weight of all accessories must be deducted from the above lifting capacities.
- The rated loads are in compliance with ISO 10567 Hydraulic Excavator Lift Capacity Rating Standard. They do not exceed 87% of hydraulic lifting capacity or 75% tipping load.
- Ratings at bucket lift hook.
- Lifting capacities are based on machine standing on level, firm and uniform ground.
- *Indicates the load is limited by hydraulic capacity rather than tipping capacity.
- Operator should be fully acquainted with the Operator's and Maintenance Instructions before operating this machine and rules for the safe operation of equipment should be adhered to at all times.

LIFTING CAPACITY (METRIC)

936E with 600 mm shoes, 3,200 mm arm

Conditions

Boom length: 6,400 mm
Arm length: 3,200 mm
Bucket: None
Counterweight: 6,500 kg
Shoes: 600 mm triple grouser
Unit: kg



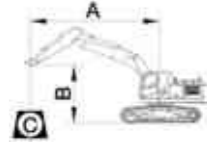
A: Load radius
B: Load point height
C: Lifting capacity rating
Cf: Rating loads over front
Cs: Rating loads over side

| B (m) | A (Unit: m) | | | | | | | | | | | | A (m) |
|--------------|-------------|---------|---------|--------|---------|-------|--------|-------|-------|-------|-----------|-------|-------|
| | 3.0 | | 4.5 | | 6.0 | | 7.5 | | 9.0 | | MAX REACH | | |
| 6.0 | | | | | | | | | | | | | 8.2 |
| 4.5 | | | | | *9,658 | 9,178 | *8,469 | 6,621 | | | *7,912 | 4,915 | 8.8 |
| 3.0 | | | *14,925 | 12,853 | *11,056 | 8,658 | *9,178 | 6,361 | 8,064 | 4,900 | 7,802 | 4,665 | 9.1 |
| 1.5 | | | *17,052 | 12,012 | *12,273 | 8,208 | *9,845 | 6,117 | 7,935 | 4,783 | 7,811 | 4,505 | 9.1 |
| GROUND LEVEL | | | *17,697 | 11,671 | *12,952 | 7,928 | 10,115 | 5,945 | 7,851 | 4,706 | 7,734 | 4,579 | 9.1 |
| -1.5 | *23,817 | 22,944 | *17,231 | 11,631 | *12,942 | 7,827 | 10,039 | 5,877 | | | 8,465 | 4,907 | 8.5 |
| -3.0 | *21,312 | *21,312 | *15,813 | 11,776 | *12,110 | 7,886 | *9,363 | 5,946 | | | *9,186 | 5,601 | 7.6 |
| -4.5 | *17,116 | *17,116 | *13,100 | 12,110 | *9,940 | 8,135 | | | | | *9,102 | 7,104 | 6.4 |

936E with 700 mm shoes, 3,200 mm arm

Conditions

Boom length: 6,400 mm
Arm length: 3,200 mm
Bucket: None
Counterweight: 6,500 kg
Shoes: 700 mm triple grouser
Unit: kg



A: Load radius
B: Load point height
C: Lifting capacity rating
Cf: Rating loads over front
Cs: Rating loads over side

| B (m) | A (Unit: m) | | | | | | | | | | | | A (m) |
|--------------|-------------|---------|---------|--------|---------|-------|---------|-------|--------|-------|-----------|-------|-------|
| | 3.0 | | 4.5 | | 6.0 | | 7.5 | | 9.0 | | MAX REACH | | |
| 6.0 | | | | | | | | | | | | | 8.2 |
| 4.5 | | | | | *9,658 | 9,324 | *8,469 | 6,731 | | | *7,912 | 5,003 | 8.8 |
| 3.0 | | | *14,925 | 13,067 | *11,056 | 8,804 | *9,178 | 6,472 | *8,128 | 4,989 | 7,929 | 4,750 | 9.1 |
| 1.5 | | | *17,052 | 12,226 | *12,273 | 8,354 | *9,845 | 6,227 | 8,066 | 4,872 | 7,817 | 4,589 | 9.1 |
| GROUND LEVEL | | | *17,697 | 11,885 | *12,952 | 8,074 | *10,255 | 6,055 | 7,981 | 4,795 | 7,749 | 4,665 | 9.1 |
| -1.5 | *23,817 | 22,944 | *17,231 | 11,845 | *12,942 | 7,973 | 10,205 | 5,988 | | | 8,476 | 4,999 | 8.5 |
| -3.0 | *21,312 | *21,312 | *15,813 | 11,990 | *12,110 | 8,031 | *9,363 | 6,057 | | | *9,186 | 5,705 | 7.6 |
| -4.5 | *17,116 | *17,116 | *13,100 | 12,324 | *9,940 | 8,280 | | | | | *9,102 | 7,231 | 6.4 |

Lifting capacity at the arm end without bucket.
For lifting capacity including bucket, weight of the bucket or the bucket with quick coupler must be deducted from the lifting capacities.

Lifting capacities are based on the machine standing on a firm, uniform supporting surface.



Rating over - front (Cf) Rating over - side (Cs)

- Do not attempt to lift or hold any load that is greater than these rated values at their specified load radius and height. Weight of all accessories must be deducted from the above lifting capacities.
- The rated loads are in compliance with ISO 10567 Hydraulic Excavator Lift Capacity Rating Standard. They do not exceed 87% of hydraulic lifting capacity or 75% tipping load.
- Ratings at bucket lift hook.
- Lifting capacities are based on machine standing on level, firm and uniform ground.
- *Indicates the load is limited by hydraulic capacity rather than tipping capacity.
- Operator should be fully acquainted with the Operator's and Maintenance Instructions before operating this machine and rules for the safe operation of equipment should be adhered to at all times.

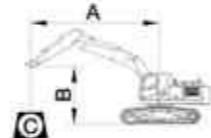
LIFTING CAPACITY (METRIC)

936E with 800 mm shoes, 3,200 mm arm

A: Load radius
B: Load point height
C: Lifting capacity rating
Cf: Rating loads over front
Cs: Rating loads over side

Conditions

Boom length: 6,400 mm
Arm length: 3,200 mm
Bucket: None
Counterweight: 6,500 kg
Shoes: 800 mm triple grouser
Unit: kg



| B (m) | A (Unit: m) | | | | | | | | | | | | |
|--------------|-------------|---------|---------|--------|---------|--------|---------|-------|-----------|-------|--------|-------|-------|
| | 3 | 4.5 | | 6.0 | 7.5 | | 9.0 | | MAX REACH | | | | |
| 6.0 | | | | | | | | | | | | | A (m) |
| 6.0 | | | | | | *7,949 | 7,053 | | | | *7,828 | 6,120 | 8.2 |
| 4.5 | | | | | *9,658 | 9,483 | *8,469 | 6,853 | | | *7,912 | 5,382 | 8.8 |
| 3.0 | | | *14,925 | 13,302 | *11,056 | 8,964 | *9,178 | 6,593 | *8,128 | 5,086 | *8,078 | 5,004 | 9.1 |
| 1.5 | | | *17,052 | 12,461 | *12,273 | 8,514 | *9,845 | 6,348 | 8,209 | 4,970 | 7,717 | 4,895 | 9.1 |
| GROUND LEVEL | | | *17,697 | 12,120 | *12,952 | 8,234 | *10,255 | 6,177 | 8,124 | 4,893 | 7,888 | 4,826 | 9.1 |
| -1.5 | *23,817 | *23,817 | *17,231 | 12,079 | *12,942 | 8,133 | *10,206 | 6,109 | | | 8,628 | 5,240 | 8.5 |
| -3.0 | *21,312 | *21,312 | *15,813 | 12,225 | *12,110 | 8,191 | *9,363 | 6,178 | | | *9,186 | 6,082 | 7.6 |
| -4.5 | *17,116 | *17,116 | *13,100 | 12,559 | *9,940 | 8,440 | | | | | *9,102 | 7,783 | 6.4 |

936E with 900 mm shoes, 3,200 mm arm

A: Load radius
B: Load point height
C: Lifting capacity rating
Cf: Rating loads over front
Cs: Rating loads over side

Conditions

Boom length: 6,400 mm
Arm length: 3,200 mm
Bucket: None
Counterweight: 6,500 kg
Shoes: 900 mm triple grouser
Unit: kg



| B (m) | A (Unit: m) | | | | | | | | | | | | |
|--------------|-------------|---------|---------|--------|---------|--------|---------|-------|-----------|-------|--------|-------|-------|
| | 3 | 4.5 | | 6 | 7.5 | | 9 | | MAX REACH | | | | |
| 6.0 | | | | | | | | | | | | | A (m) |
| 6.0 | | | | | | *7,949 | 7,225 | | | | *7,828 | 6,275 | 8.2 |
| 4.5 | | | | | *9,658 | *9,658 | *8,469 | 7,025 | | | *7,912 | 5,525 | 8.8 |
| 3.0 | | | *14,925 | 13,636 | *11,056 | 9,192 | *9,178 | 6,765 | *8,128 | 5,225 | *8,078 | 5,141 | 9.1 |
| 1.5 | | | *17,052 | 12,795 | *12,273 | 8,742 | *9,845 | 6,521 | *8,411 | 5,109 | 8,282 | 5,032 | 9.1 |
| GROUND LEVEL | | | *17,697 | 12,454 | *12,952 | 8,462 | *10,255 | 6,349 | 8,328 | 5,032 | 8,205 | 4,963 | 9.1 |
| -1.5 | *23,817 | *23,817 | *17,231 | 12,413 | *12,942 | 8,360 | *10,206 | 6,282 | | | *8,787 | 5,389 | 8.5 |
| -3.0 | *21,312 | *21,312 | *15,813 | 12,559 | *12,110 | 8,419 | *9,363 | 6,350 | | | *9,186 | 6,252 | 7.6 |
| -4.5 | *17,116 | *17,116 | *13,100 | 12,892 | *9,940 | 8,668 | | | | | *9,102 | 7,992 | 6.4 |

STANDARD EQUIPMENT

ENGINE SYSTEM

- Cummins diesel engine, turbocharged, inline 6-cylinder, 4 stroke, water cooled
- Auto-idle speed control
- Air filter with pre-cleaner
- Engine oil filter
- Pre-filter with water separator
- Radiator, oil cooler and intercooler
- IPC (Intelligent Power Control) System
- Engine overheating prevention system

DRIVETRAIN

- Hydraulic motor, one-piece two-gear piston and reducer
- 2-speed travel system with automatic shift

SWING SYSTEM

- High-torque piston swing motor with integral spring set and automatic hydraulic release swing brake

HYDRAULIC SYSTEM

- Main pump: two variable displacement piston pumps, ready for PTO
- Pilot pump: gear
- Cylinders: boom, stick, bucket
- Power boost function
- Boom and arm regeneration circuits
- Pilot oil filter
- Load holding valve
- Pilot control shut-off lever

- Hose burst safety valves, prevention of boom or arm supply dropped when the lines split (2 mounted on boom cylinders, 1 on arm cylinder)
- 6-working mode selection system: Power, Economy, Fine, Lifting, Breaker, Attachment

DIGGING EQUIPMENT

- 930E
 - 6,400 mm boom
 - 3,200 mm arm
 - 1.6 m³ (SAE, heaped) bucket
- 936E
 - 6,400 mm boom
 - 3,200 mm arm
 - 1.6 m³ (SAE, heaped) bucket

OPERATOR STATION

- Pressurized and sealed cab with all-around visibility, large roof window with slide sliding sun visor, front window wiper and removable lower window
- Roll-Over Protective System (ROPS)
- Skylight rooftop
- Air conditioner, heater, defroster
- Swing parking brake
- AM/FM radio with MP3 audio jack
- Glass-breaking hammer
- Ashtray, cigarette lighter
- Cup holder
- Floor mat
- Storage box
- Front glass lower guard
- Fire extinguisher
- Rear view mirrors
- One key for all locks

INSTRUMENTATION

- Color LCD monitor with alarms, filter/fluid change, fuel rate, water temperature, work mode, fault code, working hour, etc.
- Fuel gauge
- Hydraulic oil level gauge

ELECTRICAL

- Alternator 70 A
- Dual batteries 12 V
- Working lights, 1 frame mounted, 2 boom mounted
- Starting, 24 V

UNDERCARRIAGE

- 600 mm (24") track-shoes with triple grousers
- 2 piece track-guards (each side)
- Towing eye on base frame

GUARDS

- Belly guards
- Cover plate under travel frame
- Track shields

OTHER STANDARD EQUIPMENT

- 5,500 kg counterweight (930E)
- 6,500 kg counterweight (936E)
- Maintenance tool kit
- Maintenance parts package

OPTIONAL EQUIPMENT

ENGINE SYSTEM

- Electrical fuel refilling pump

HYDRAULIC SYSTEM

- Control pattern change valve
- Hydraulic lines: Breaker & shear
- Slope & rotator Grapple
- Oil drain line
- Quick coupler
- Hydraulic quick coupler
- Overloading valve
- Cushion valve

OPERATOR STATION

- Power outlet 24 V to 12 V converter
- 4 LED cab top lights
- Working lights on cab (2 on top-front cab)
- Rear view camera 5.7" monitor
- Air suspension seat
- Control joysticks with 2 switch & 1 proportional
- Safety net for front window
- Rain visor
- Travel alarm
- Rotating beacon
- Operation protection guard (included cab front and top guard, bar)
- Operation protection screen (on cab front, net)
- Operation protection screen (front-lower)

UPPER STRUCTURE

- Upper frame protection (wire)
- Belly guard and 8 mm thickness platform bottom plate
- Bucket cylinder guard

UNDERCARRIAGE

- 700 mm, 800 mm, 900 mm track-shoes with triple grousers
- 3 piece track-guards (each side)

DIGGING EQUIPMENT

- 2.6 m arm
- 1.6 m³ (930E, SAE, heaped) bucket
- 1.9 m³ (936E, SAE, heaped) bucket



Guangxi LiuGong Machinery Co., Ltd.
No. 1 Liutai Road, Liuzhou, Guangxi, PR China
545007
T: +86 772 388 6124
E: overseas@liugong.com
www.liugong.com

Like and follow us:



LG-PB-930E/936E-T4F-WW-A4-022018-ENG

LiuGong series of logos herein, including but not limited to word marks, device marks, letter of alphabet marks and combination marks, as the registered trademarks of Guangxi LiuGong Group Co., Ltd. are used by Guangxi LiuGong Machinery Co., Ltd. with legal permission, and shall not be used without permission. Specifications and designs are subject to change without notice. Illustrations and pictures may include optional equipment and may not include all standard equipment. Equipment and options varies by regional availability.